

Inside photo

foldable arm

Highspeedbarrier

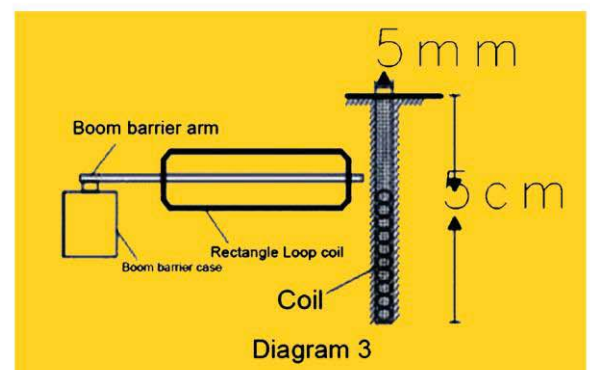
Fence arm

Feature

This product design is reasonable, the connecting rod deceleration machine, has simple structure, smooth operation, blackouts, manual make the barrier up, installation, use & maintenance is convenient, safe and reliable, beautiful modelling, etc. Is the ideal special Road or Bridge, parking lot Boom Barrier. The products main function and feature is below:

1. Simple: adopt crank rod system transmission, reduce the mechanical fault, low noise, no pollution, no need to maintain.
2. High sensitivity of magnetic susceptibility limit control system. The low voltage dc control, safety and reliability, limit accurate.
3. Special balance institutions, ever try to keep up vertical, horizontal and stable fall rod, constant operation eliminates gate lifting process play bolton machine and starting gate the phenomenon of accelerating rapid pole.
4. Box Spry painting technics same as car's painting technics, The color is easy not fade at a long time with ultraviolet ray, sun shine. Boom barrier tube material is the strength aluminium alloy, and cover the ant-vibration prevent collision foam rubber, Boom Barrier paste reflective film, eye-catching appearance and timely warning drivers.
5. Equipped with the janitor hardware and software sank into the single-chip microcomputer control, never crash.
6. Manual button can be "up", "down" and "stop" operation.
7. Wireless remote control can be "up", "down" and "stop" operation.
8. Service life is more 2 million times.
9. Power off automatic to unlock, Barrier up can be manual, and easy to maintain, have the commissioning of the "self" mode.
10. But first, with vehicle sensor with "car through, the barrier automatic fall", "anti-dumping car" or "rush barrier automatic raising up" function.
11. Optional designed for road charging and add to the ceiling, equip with channel two traffic lights.
12. According to customer needs to increase the other special function

| DIOP1 | DIOP2 | sensitivity |
|-------|-------|-------------|
| ON | ON | 3 (high) |
| ON | OFF | 2 |
| OFF | ON | 1 |
| OFF | OFF | 0 (Low) |



Regarding the vehicle detector system's details

Specification

Material:1.8mm cold-rolled steel plate

Arm type: straight arm

Arm Rail up or down time:4-6s

Housing color keeping : 3-5 years

Working temperature:-45℃~80℃

Anti-crash function protect the car not damaged by the arm.

Dimension:345*295*1000mm

Arm Material : aluminum alloy

Arm length \leq 6m

Power: Turbine vortex pole motor 80W

Voltage:110V~220V/50Hz~60Hz

Control panel connector : traffic light connector, pressure wave connector, 485/422 connector

Protection grade:IP65

Net weight:49KG

Accessories



control board



Pressure waves



manual controller



80W motor



remote controller

Model Option

| Model Number | Photo | Specification |
|---------------|-------|---|
| PS-DB801HXI | | Voltage:110V~220V/50Hz~60Hz Arm type: straight arm Arm length \leq 6m Arm Rail up or down time:4-6s Power: Belt motor 200W Working temperature:-45℃~80℃ Dimension:330*330*1100mm Net weight:49KG |
| PS-JXDB02 | | Voltage:110V~220V/50Hz~60Hz Arm type: straight arm Arm length \leq 6mm Arm Rail up or down time:4-6s Power: Turbine vortex pole motor 80W Working temperature:-45℃~80℃ Dimension:345*310*1000mm Net weight:49KG |
| PS-DB801 | | Voltage:110V~220V/50Hz~60Hz Arm type: straight arm Arm length \leq 6m Arm Rail up or down time:4-6s Power: Turbine vortex pole motor 80W Working temperature:-45℃~80℃ Dimension:345*295*1000mm Net weight:49KG |
| PS-DB807 | | Voltage:110V~220V/50Hz~60Hz Working temperature:-45℃~80℃ Arm type: fold arm Arm length \leq 5m Arm Rail up or down time:4-6s Power: Turbine vortex pole motor 80W Dimension:345*295*1000mm Net weight:49KG |
| PS-DB808(R)-2 | | Voltage:110V~220V/50Hz~60Hz Working temperature:-45℃~80℃ Arm type: two fences arm Arm length \leq 5m Arm Rail up or down time:4-6s Power :Turbine vortex pole motor 80W Dimension:345*295*1000mm Net weight:49KG |
| PS-G25 | | Voltage:110V~220V/50Hz~60Hz High integrated circuit control procedures Working temperature:-45℃~80℃ Material:2.2mm cold-rolled steel plate Arm Material : aluminum alloy Arm type: straight arm Arm length 3 m Arm Rail up or down time:0.9-1.2s Power :Torque motor 80W Dimension:400*420*1080mm Net weight:64KG |