

TF1600

Outdoor Fingerprint Access Control Terminal IP65 Rating and Resistance to Low Temperature



As one of the world's smallest IP-based fingerprint terminals for access control and time attendance application, TF1600 is specially designed for working in rugged outdoor environment particularly in very low temperature condition.

With built-in resistors, the device will be automatically heated up by itself if its MCU detects the temperature is below working requirement. TF1600 is adapted for operating temperature that ranges from -40 to 45, maximizing the minimum working environment.

Embedded with the latest firmware, TF1600 supports ZKAccess3.5 management software which has versatile features and powerful functions. Though there's no keypad available on TF1600, users can be registered on the device by the Master Card since it is integrated with 125KHz proximity card reader. It can also complete the enrollment through connecting with ZKAccess3.5 software by Ethernet.



Rugged Structure for Outdoor Installation and Extra Durability

- IP65 rated waterproof and dustproof structure



Resistance to Cold Environment

- Built-in resistors
- Automatic heating for required working temperature



Fast and Accurate Fingerprint Algorithm

- 1 touch a-second user recognition
- Store 3,000 fingerprints templates, 30,000 cards and 100,000 transactions



Easy Installation and Connectivity

- Wiegand input & output
- Network interface by TCP/IP or RS485



Full Access Control Features

- Anti-passback
- Access control interface for 3rd party electric lock, door sensor, exit button, alarm



Slim and Elegant Design

- One of the world's smallest fingerprint terminals
- Sleek and slim design for narrow spaces

Specifications

Fingerprint Sensor	Low Temperature Resistance
Algorithm Version	ZKFinger V10.0
Communication	TCP/IP, RS485
Fingerprint Capacity	3,000 Fingerprints
Card Capacity	30,000 Cards
Log Capacity	100,000 Transactions
RF Card	EM(standard)/Mifare(optional)
Authentication	Finger/Card
Wiegand Signal	Wiegand input&output
Ingress Protection Rate	IP65
Operating Voltage	12VDC 3A
Operating Temperature	-40 °C~45 °C (40°F ~ 113°F)
Size	62.5mm×185mm×41.5mm (W×H×D)

Optional Accessories



FR1200



RFID Reader



Exit Button



Electric Lock

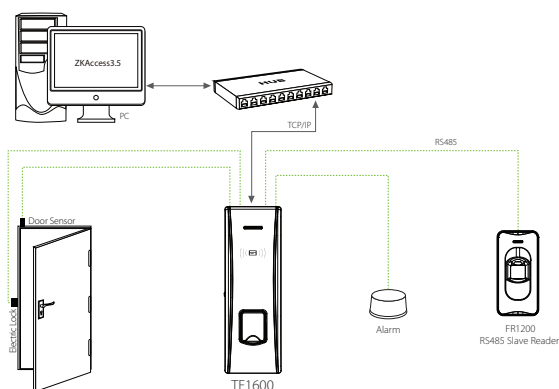


Alarm

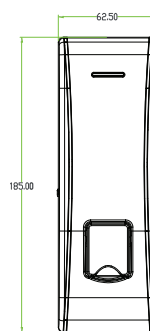
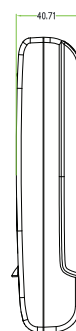


Sensor

Configuration



Dimensions (mm)



ZKTeco Middle East
E-mail: zk_me@zkteco.com
www.zkteco.me