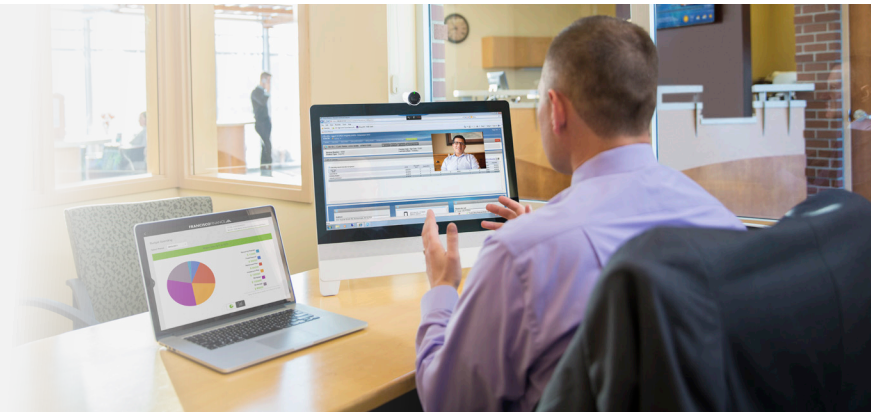


# Cisco 550X Series Stackable Managed Switches

## Benefits

- Boost network performance with 10 Gigabit Ethernet
- Conserve power consumption and costs
- Enhance network security
- Increase network uptime with redundant fans and power
- Simplify operations with rich capabilities



## Strengthen Your Network to Meet Growing Demands

Everyone, from employees to vendors to customers, needs access to your network resources at a moment's notice. The growing number of users and devices is creating greater traffic loads on your network. So are newer applications like video, collaboration, cloud, and wireless. A bigger network "pipe" can help you avoid slowdowns and unreliable user response times amid this growth.

To get the fast data speeds, nonstop availability, and advanced security you need in your local area network (LAN), you can turn to the Cisco® 550X Series Stackable Managed Switches. They are built with 10 Gigabit Ethernet connectivity, giving you the speed you need to share information quickly.

They deliver substantial productivity gains today and help future-proof your network for the demanding applications of tomorrow. The solution is simple to manage and supports advanced features traditionally reserved for large enterprises, but now priced for small and midsize businesses.

## Experience the High Performance of 10 Gigabit Ethernet

Cisco 550X Series Stackable Managed Switches (Figure 1) offer the flexibility you need to meet your business requirements. These switches offer 24- to 48-port Gigabit or Fast Ethernet with 10 Gigabit uplinks, and 16- to 48-port 10 Gigabit Ethernet with both copper (10GBase-T) and fiber (Small Form Factor Pluggable Plus [SFP+]) options.

Figure 1. Cisco 550X Series Switches



The 550X Series is built with true stacking capability to support up to eight units and 400 ports in a single stack. With 10-Gbps copper ports on SG550XG switches, you can easily and cost-effectively enable 10-Gbps connections to servers and network storage devices with standard RJ45 Ethernet cable. You can also connect your SG550X access switches to the SG550XG aggregation switch with 10-Gbps SFP+ fiber, building a high-performance backbone to speed up the overall operation of your network.

### Rich Capabilities

Many capabilities are built into the 550X Series Switches to simplify the deployment and operation of your network. Some examples include:

- **Redundancy:** Preinstalled N+1 fans and power supply connector help safeguard against network disruption for maximum uptime.
- **Power reduction:** The latest ASIC technology provides power efficiency that reduces your carbon footprint and your energy bill.
- **Operations simplification:** Dynamic Layer 3 routing features reduce the need to manually configure routing devices.

- **Security:** Advanced security features include access control lists (ACLs), guest virtual LANs (VLANs), encrypted management data, and IEEE 802.1X security.
- **Threat defense:** Dynamic Host Configuration Protocol (DHCP) snooping, dynamic Address Resolution Protocol (ARP) inspection, IPv6 first-hop security, and denial-of-service (DoS) attack prevention help protect your network.

The Cisco 550X Series switches provide true stacking, allowing you to configure, manage, and troubleshoot all switches in a stack as a single unit. Some competing vendors claim to support stacking, but require you to configure and manage each switch individually.

### Next Steps

For more information about 10 Gigabit Ethernet and the Cisco 550X Series switches, visit <http://www.cisco.com/go/550Xswitches>.