

RG-RAP52-OD

Reyee Wi-Fi 5 AC1300 Access Point

DATASHEET

[Explore More ▶](#)



Highlights

- AC1300 Wave 2 Outdoor Mesh Mini-size AP For Villa & Retail
- Bracket or Poles, Flexible Installation to Fit Multi-Scene
- Weatherproof - Rated as IP65, Consistent Protection, Stable Signal
- Detachable Antennas, Cover Where You Need Specially
- Reyee Mesh, Standalone Portal, AI Roaming, Optimized Features for Street Business

Highlight Features



Flexible Installation to Fit Multi-Scene



Wall Mounting



Pole Mounting

Reliable Wi-Fi Performance and Superior Coverage for Your Business

AC1300 chip solution along with Enterprise-grade high-gain amplifiers and subtle design of antennas, make the whole device perform perfectly in coverage and quality Wi-Fi delivered.

5Ghz 867 Mbps

2.4Ghz 400 Mbps

2.4Ghz: 300m+

5Ghz: 400m+



Reyee Mesh



IP65



Detachable Antennas



Flex-installation



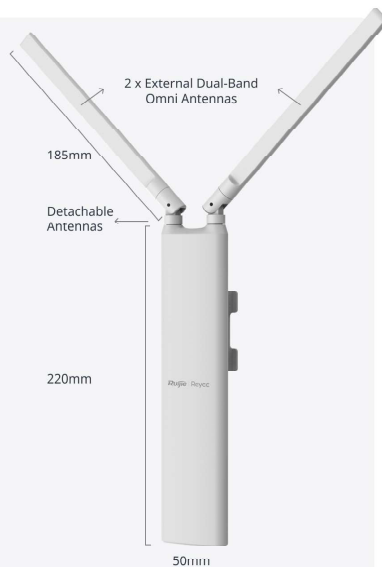
Cloud Management

Highlight Features

Refined Appearance

Incredibly Thin
Impressively Small

Adapt to Modern Life Change



Feeling
without
Seeing



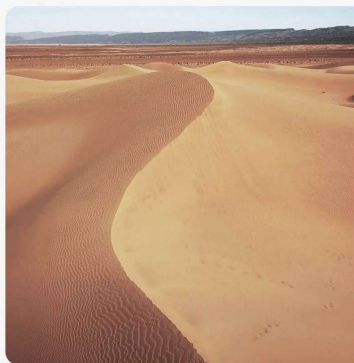
Consistent Protection, Stable Signal

Weatherproof - Rated as IP65 during Ingress Protection Testing



Raining-Proof

(Within A distance of 2.5 meters) strongly
sprayed by water with a flow rate of
12.5±0.625(L/min)



Dust-Proof

Highest Protection to prevent tiny dust into the
inside of device



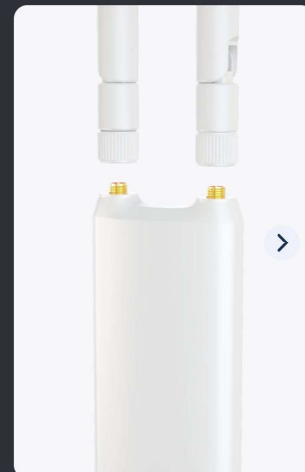
Surge-Protection

4kV Lightning Protection
15kV ESD Protection

Detachable Antennas (SMA Standard)

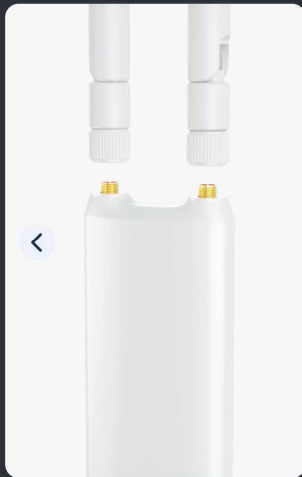
Omnidirectional

Wider Coverage of Service Area

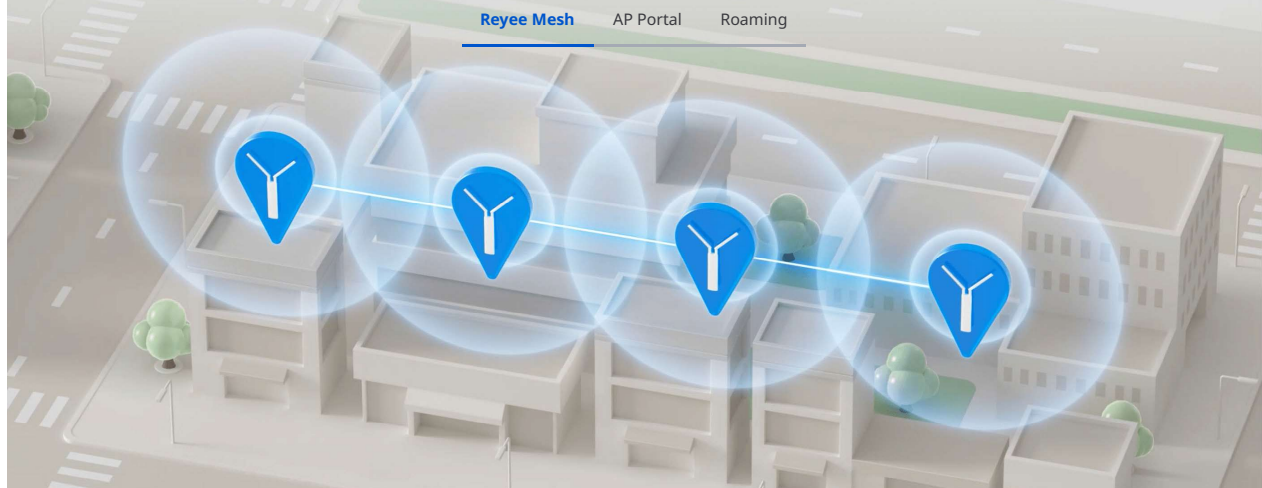


Highlight Features

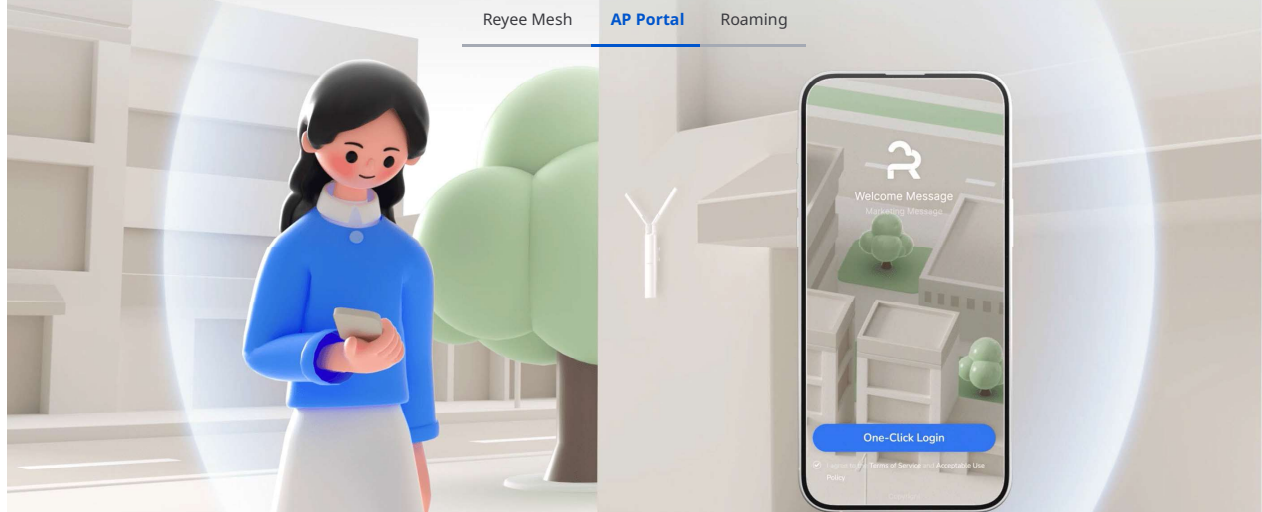
Detachable Antennas (SMA Standard)



Optimized Features for Street Business



Optimized Features for Street Business

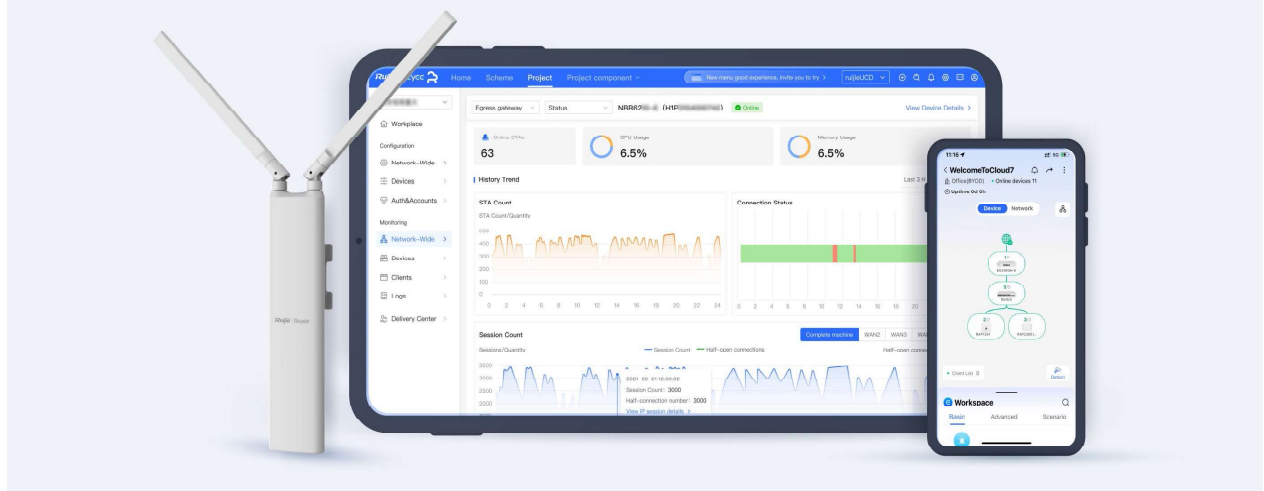


/ Highlight Features



Cloud, Make Your Business Easy

- Self-organizing network
- Cloud portal authentication
- Centralized network management
- Remote monitoring and maintenance



Specifications

Model		RG-RAP52-OD
Hardware Specifications		
Wi-Fi Protocols	5 GHz	Wi-Fi 4: IEEE 802.11a/n Wi-Fi 5: IEEE 802.11ac Wave2
	2.4 GHz	Wi-Fi 4:IEEE 802.11b/g/n
Operating Frequency Bands (country-specific restrictions apply)	5 GHz	5.150 GHz to 5.350 GHz, 5.470 GHz to 5.725 GHz, 5.725 GHz to 5.850 GHz
	2.4 GHz	2.400 GHz to 2.4835 GHz
Spatial Streams	5 GHz	2 spatial streams, 2x2 MIMO
	2.4 GHz	2 spatial streams, 2x2 MIMO
Antenna	Omni-directional	Yes
	5 GHz Antenna Gain	4.0dBi
	2.4 GHz Antenna Gain	3.0dBi
Channel Width	5 GHz	Auto/20/40/80 MHz
	2.4 GHz	Auto/20/40 MHz
Data Rate	Max Throughput	1266Mbps
	5 GHz	866Mbps
	2.4 GHz	400Mbps
Max. Transmit Power	5 GHz	≤125mW(21dBm)
	2.4 GHz	≤160mW(22dBm)
Wi-Fi Coverage	Max. Wi-Fi Coverage Range (5 GHz)	400m
	Max. Wi-Fi Coverage Range (2.4 GHz)	300m

Specifications

Model		RG-RAP52-OD
Hardware Specifications		
Modulation	Modulation	OFDM: BPSK@6/9 Mbps, QPSK@12/18 Mbps, 16QAM@24 Mbps, 64QAM@48/54 Mbps DSSS: DBPSK@1 Mbps, DQPSK@2 Mbps, and CCK@5.5/11 Mbps MIMO-OFDM: BPSK, QPSK, 16QAM, 64QAM, 256QAM
Receiver Sensitivity	Receiver Sensitivity	11b: -91dBm(1Mbps), -88dBm(5.5Mbps), -85dBm(11Mbps) 11a/g: -89dBm(6Mbps), -80dBm(24Mbps), -76dBm(36Mbps), -71dBm(54Mbps) 11n: -83dBm(MCS0), -65dBm(MCS7), -83dBm(MCS8), -65dBm(MCS15) 11ac: 20MHz: -83dBm(MCS0), -57dBm(MCS9) 11ac: 40MHz: -79dBm(MCS0), -57dBm(MCS9) 11ac: 80MHz: -76dBm(MCS0), -51dBm(MCS9)
Dimensions (W x D x H)	Dimensions (excluding mounting kits)	220 mm × 50 mm × 35.7 mm (8.66 in. x 1.97 in. x 1.41 in.) antenna size: 185mm (7.28 in.)
Weight	excluding mounting kits	≤ 0.4 kg (0.88 lbs.)
Service Ports	Number of 10/100/1000BA SE-T Ports	1 (supports 802.3af PoE)
	Number of 10/100/1000/2500BASE-T Ports	0
	Number of 1 Gbps Optical Ports (SFP)	0
	Number of 10 Gbps Optical Ports (SFP+)	0
Power Supply	DC(Local Power)	No
	DC Port Dimensions	No
	802.3af	Yes
	802.3at	Yes
	802.3bt	N/A
	48 V passive PoE	N/A

Specifications

Model		RG-RAP52-OD
Hardware Specifications		
PoE Out	Max. PoE Wattage by PSE	No
Power Consumption	Power Consumption	< 13.5 W
Power Adapter	Power Adapter	No
Buttons	Button	1 × Factory reset
LEDs	LEDs	1 × System LED indicator(blue)
Environment	Operating Temperature	−30°C to +65°C (−22°F to +149°F)
	Storage Temperature	−40°C to +75°C (−40°F to +167°F)
	Operating Humidity	10% to 95% (non-condensing)
	Storage Humidity	10% to 95% (non-condensing)
Mounting	Ceiling-mount	No
	Wall-mount	Yes
	Pole-mount	Yes
Compliance Standards	Health	EN IEC 62311:2020
	Spectrum	EN 300 328 V2.2.2 EN 301 893 V2.1.1 EN 300 440 V2.2.1
Weatherproof	IP Rating	IP65
	Lightning Protection/Surge	±4 kV
Software Specifications		
Operating Mode (AP Mode and Router Mode)	Router Mode	Yes
	AP Mode	Yes
WLAN	Recommended Number of Clients	16(2.4G)+64 (5G) =80
	Max. Number of SSIDs	8

Specifications

Model		RG-RAP52-OD
Software Specifications		
WLAN	Radio-based STA Limit	Yes
	Layer 2 Client Isolation	Yes
	OFDMA Subcarrier	No
	OFDMA	No
	Target Wake Time (TWT)	No
	Wi-Fi Multimedia (WMM)	Yes
	802.1Q VLAN	Yes
	Multi-Link Operation (MLO)	No
	4K-QAM	No
	Same SSID for Different VLANs	Yes
Roaming	802.11k/v	Yes
	802.11r	Yes
	Layer 2 Roaming	Yes
	Layer 3 Roaming	Yes
	AI Roaming	Yes
Security	PSK Authentication	Yes
	Static Blocklist and Allowlist	Yes
	WPA (TKIP), WPA2 (AES), and WPA-PSK	Yes
	OWE (Enhanced Open) WPA3-SAE WPA2-PSK/WPA3-SAE	No

Specifications

Model		RG-RAP52-OD
Software Specifications		
Security	802.1X	Yes
	ARP Check	No
	IP Source Guard	No
	LLDP	No
	Static ARP Binding	Yes
	Proxy ARP	No
	Ping	Yes
	Traceroute	Yes
Routing	NAT	Yes
	Static IP Address	Yes
	DHCP Server	Yes
	PPPoE Client PPPoE Dial-up	Yes
AP Mesh	Mesh Management	Yes
	Reyee Mesh	Yes
Standalone Portal	Captive Portal	Yes
	Bandwidth Limit	Yes
	Data Quota	No
Management and Maintenance	Default Access/Password	Yes
	No. of APs on a Self-Organizing Network	300
	Unified Networking for All Network Equipment	Yes

/ Specifications

Model		RG-RAP52-OD
Software Specifications		
Management and Maintenance	Local or Remote Management via Ruijie Reyee App	Yes
	Local Management via the Web Interface	Yes
	Remote Management via Ruijie Cloud	Yes
	SNMP	No
Platform Management Features	Optimization of Channel, Transmit Power, and Management Frame Power Settings. Both Pre- and Pro-Optimization Settings are Displayed.	Yes
	Unified Configuration via Ruijie Cloud	Yes
	Unified Monitoring via Ruijie Cloud	Yes
Others		
Flash	Flash	16MB
Memory	Memory	128MB
Color of AP Enclosure	Color of AP Enclosure	Ruijie White



 **R**edefine **y**our **e**asy **n**etwork

Copyright ©2000-2024 Ruijie Networks Co., Ltd. All rights reserved.

No part of this document may be reproduced or transmitted in any form or any means without prior written consent of Ruijie Networks Co., Ltd.

Notice

This content is applicable only to regions outside the China mainland. Ruijie Networks Co., Ltd. reserves the right to interpret this content.

The information contained herein is subject to change without notice. Nothing herein should be construed as constituting an additional warranty. Ruijie Networks Co., Ltd. shall not be liable for technical or editorial errors or omissions contained herein.



Ruijie Networks Co., Ltd.

Official Website: <https://Reyce.Ruijie.com>