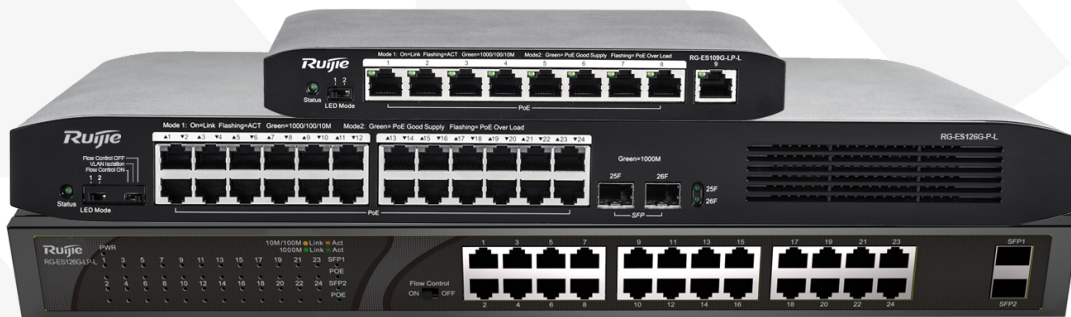


Unmanaged Switches

RG-ES100 Series



Ruijie Networks Co., Ltd.

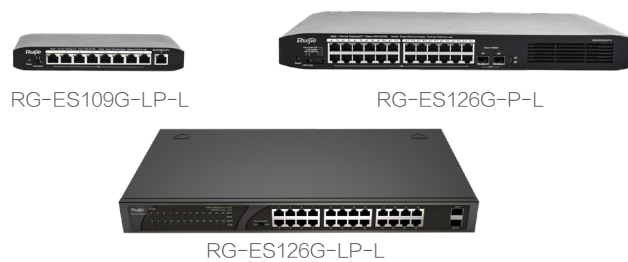
For further information, please visit our website <https://www.ruijienetworks.com>

Product Overview

Ruijie RG-ES100 Series Switches are the next-generation unmanaged switches for scenarios like CCTV, ELV and small offices. The series is designed for small and medium-sized businesses looking for Plug-n-Play solution.

Ruijie RG-ES100 Series is part of the Ruijie SME networking products. The series consists of 3 switches including one 8-port Gigabit PoE+ models and two 24-port Gigabit PoE+ switch models.

These switches can be deployed with plug-and-play out the box. Moreover, port-isolation and flow-control features can be done with a simple flip with the button on the panel. Also, PoE budget status can be shown directly on port indicators, which helps a lot in troubleshooting.



Highlights

- 24-port and 8 port Gigabit PoE for CCTV/ELV and other SME scenarios
- One-click button simple management beyond Plug-n-Play
- 370W and 180W PoE budget choices on 24-port models
- All 8/24 ports are PoE/PoE+ capable, feel free to choose any ports
- 3 year warranty free of charge

Product Features

Easy Connectivity

● Full Gigabit Ethernet

10/100/1000Mbps choice on every port, line-rate forwarding.

● Auto MDI/MDIX

All RJ45 ports support auto MDI/MDIX, no restrictions on cables when link to client or other switches.

● Fiber uplink options

RG-ES126G-P-L and RG-ES126G-LP-L provides 2 GE-SFP ports for fiber uplink.

Power over Ethernet

- **PoE/PoE+**

Provides up to 30Watt per port, which allows support of latest IEEE802.3at(PoE+) capable devices such like high-performance access points and IP cameras, as well as any IEEE802.3af(PoE)-compliant powered devices.

- **Power on all ports**

Ports 1~8 of RG-ES109G-LP-L and ports 1~24 of RG-ES126G-LP/P-L are all PoE/PoE+ capable.

- **PoE budget choice**

Multiple PoE power budget choice between 185W and 370W on 24-port models.

More than Plug-n-Play

- **One-click flow control**

With the flip button on the panel, flow control(IEEE802.3X) can be easily enabled to smooth traffic and avoid packet drop due to sudden traffic surge.

- **One-click port isolation**

With the flip button on the panel, users can also set port isolation between each port, which helps to ensure CCTV camera safety.

- **PoE budget indicator**

PoE budget status can be seen on LED indicators of each port.

Warranty and Support

- **3-Year Warranty Free of Charge**

Go to <https://www.ruijienetworks.com/support/servicepolicy> to see details on warranty and support policies.

Technical Specifications

Product Model		RG-ES126G-P-L	RG-ES126G-LP-L	RG-ES109G-LP-L
Ports	10/100/1000 BASE-T	24	24	9
	Auto MDI/MDI-X	✓	✓	✓
	1000M SFP	2	2	n/a
Power over Ethernet	PoE	✓	✓	✓
	PoE/PoE+ enabled Ports	24	24	8
	PoE power budget	370W	180W	54W
Physical	Dimensions (WxDxH)	440x 292 x43.6	440x 205 x43.6	206.5x 108.5 x28
	Unit Weight	4.2kg	4.2kg	1.1kg
	Surge protection	4KV		
Power Supply	Type	Internal	Internal	Power Adaptor
	Input frequency	50/60Hz		
	Input voltage	AC 100~240V		
Cooling		Fan	Fan	Fanless
Certifications	Safety	EN 60950-1	EN 62368- 1	EN 60950-1
	EMC	EN 300 386		
	Emissions	EN 55032, EN 55035		
	Immunity generic	EN 55024		
	ESD	EN 61000-4-2		
	Radiated	EN 61000-4-3		
	EFT/Burst	EN 61000-4-4		
	Surge	EN 61000-4-5		
	Conducted	EN 61000-4-6		
	Power frequency magnetic field	EN 61000-4-8		
	Voltage dips and interruptions	EN 61000-4-11		
	Harmonics	EN 61000-3-2		
	Flicker	EN 61000-3-3		
RoHS		✓		
Operating temperature		0 °C ~ 40 °C		
Storage temperature		-40 °C ~ 70 °C		
Operating humidity		5%~90% RH		
Storage humidity		5%~95% RH		

Product Model		RG-ES126G-P-L	RG-ES126G-LP-L	RG-ES109G-LP-L
Warranty		3-Year Warranty Free of Charge		
Package Contents		Ruijie RG-ES100 Series Switch Power Cord Mounting Kit Quick Start Guide		Ruijie RG-ES100 Series Switch Power Cord Power Adaptor Rubber Feet Quick Start Guide
Performance	Switching capacity	52Gbps	52Gbps	18Gbps
	Forwarding rate	39Mpps	39Mpps	13.5Mpps
Easy management	Flow control (IEEE802.3X)	✓		
	Port isolation	✓	n/a	✓
	PoE budget indicators	✓		

Ordering Information

Model	Description
RG-ES126G-P-L	Unmanaged Switch, 24 10/100/1000BASE-T ports, 2 1000M SFP ports, AC power supply, support PoE/ PoE+, PoE power budget: 370W
RG-ES126G-LP-L	Unmanaged Switch, 24 10/100/1000BASE-T ports, 2 1000M SFP ports, AC power supply, support PoE/ PoE+, PoE power budget: 180W
RG-ES109G-LP-L	Unmanaged Switch, 9 10/100/1000BASE-T ports, external AC-DC power adaptor, support PoE/ PoE+, PoE power budget: 54W

Ruijie



Ruijie Networks Co., Ltd.

For further information, please visit our website <https://www.ruijienetworks.com>

All rights are reserved by Ruijie Networks Co., Ltd. Ruijie reserves the right to change, modify, transfer, or otherwise revise this publication without notice, and the most current version of the publication shall be applicable.