

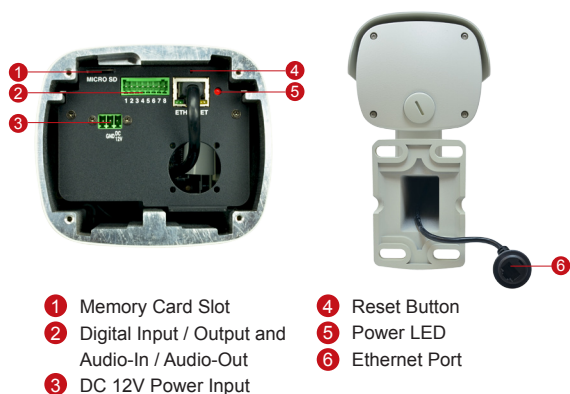
B46

5MP, Zoom Bullet with D/N, Adaptive IR, Basic WDR, 10x Zoom Lens

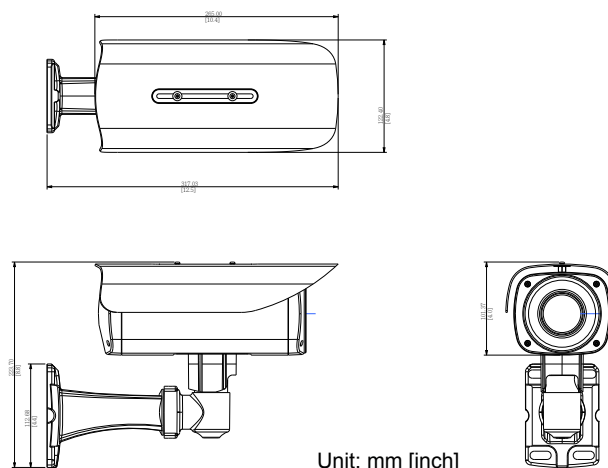


- 5 Megapixel
- Day & Night with Adaptive IR LED
- 10x Zoom Lens with f4.9 - 49mm / F1.6 - 3.0, DC Iris, Auto Focus
- Basic WDR (74 dB)
- 30 fps at 1920 x 1080
- Weatherproof (IP67) and Vandal Proof Metal Casing (IK10)

PHOTO INDICATION



DIMENSION DIAGRAM



ACCESSORY OPTIONS

Power Supply		
PPOE-0001		IEEE 802.3af PoE Injector for Class 1, 2 or 3 devices, with universal adapter
PPBX-0011		Power Adapter AC 100-240V, with universal connector for all DC12V powered devices

Popular Mounting Solutions	
Wall	Integrated bracket
Ceiling	PMAX-1300
Pole	PMAX-0504
Gang Box	PMAX-0806

* For more mounting solutions, please refer to the Mounting Accessory Selector on <https://www.acti.com/mountingselector>.

PRODUCT SPECIFICATION

B46

• Device

Device Type	Zoom Bullet Camera
Image Sensor	Progressive Scan CMOS
Sensor Size	1/3.2"
Effective Pixels	2592 (H) x 1944 (V) (5.04 MP)
Horizontal Resolution	1500 TVL
Day / Night	Yes
Low Light Sensitivity	Standard
Minimum Illumination	Color: 0.1 lux at F1.6 (30 IRE, 2400°K), B/W: 0 lux at F1.6 (IR LED on)
Color to B/W Switch	ISP based switch, configurable
Mechanical IR Cut Filter	Yes
IR Sensitivity Range	700~1100nm
IR LED	Adaptive IR LED x 27 (850 nm)
IR Working Distance	40 m
Electronic Shutter	1/5 ~ 1/2,000 sec (manual mode), 1/5 ~ 1/10,000 sec (auto mode)
S/N Ratio	52 dB

• Lens

Focal Length / Aperture	Zoom, f4.9 - 49mm / F1.6 - 3.0
Zoom Ratio / Speed	10x optical / 2.5 sec (wide to tele)
Zoom Application	Camera installation, Auto zoom by event, Manual operation
Iris	DC iris
Focus	Auto focus
Mount Type	Board mount
Horizontal Viewing Angle	49.7° ~ 5.8°

• Video

Compression	H.264 (Baseline / Main / High profile), MJPEG
Max. Frame Rate vs. Resolution	15 fps at 2592 x 1944, 15 fps at 2048 x 1536, 30 fps at 1920 x 1080, 30 fps at 1280 x 720, 30 fps at 800 x 600, 30 fps at 640 x 480, 15 fps at 320 x 240
Multi-Streaming	Simultaneous dual streams based on two configurations
Bit Rate	28 Kbps - 6 Mbps (per stream)
Bit Rate Mode	Constant, Variable
Privacy Mask	4 configurable regions for each of 17 preset points
Image Enhancement	Basic WDR (74 dB), White Balance, Brightness, Contrast, Sharpness (auto), Auto Gain Control, 2D+3D Digital Noise Reduction, Flickerless
Text Overlay	Yes
Image Orientation	Flip and Mirror

• Audio

Compression	8kHz, Mono, PCM, 16 bit encoding, G.711
Audio Type	2-way, Line-in, Line-out

• Network

Protocol & Service	IPv4/v6, TCP, DHCP, PPPoE, HTTP, HTTPS, DNS, DDNS, NTP, RTP, RTSP, RTCP, SMTP, FTP, IGMP, ICMP, ARP, Bonjour, UPnP, QoS, SNMP, IEEE 802.1X
Ethernet Port	1, Ethernet (10/100 Base-T), RJ-45 connector
Security	IP address filtering, HTTPs encryption, Password protected user levels, Anonymous login, IEEE802.1X network access control

• Alarm

Alarm Trigger	Video motion detection (3 regions), External device through digital input, Sound detection
Alarm Response	Notify control center, Go to Zoom preset point or preset tour, Change camera settings, Command other devices, E-mail notification with snapshots, Play the audio file, Push notification to mobile device, Save video to local storage, Upload video or snapshot to FTP server, Upload video to NVR server, Activate external device through digital output

• Interface

Digital Input / Output	1/1, Terminal block
Audio Interface	Terminal block
Local Storage	MicroSDHC, MicroSDXC card slot (card not included)

• General

Power Source	PoE Class 3 (IEEE802.3af), DC 12V
Power Consumption	12 W (PoE, heater and IR on)
Weight	2.3 kg (5.07 lb)
Dimensions (W x H x D)	122.4 mm x 223.7 mm x 317 mm (4.82" x 8.81" x 12.48")
Environmental Casing	Weatherproof (IP67 rated); Vandal proof metal casing (IK10)
Bundled Accessories	Integrated Bracket
Mount Type	Wall, Pole, Ceiling, Gang box
Starting Temperature	-30°C ~ 50°C (-22°F ~ 122°F) within 30 mins
Operating Temperature	-40°C ~ 50°C (-40°F ~ 122°F)
Operating Humidity	10% ~ 85% RH
Approvals	CE, FCC, IP67, NEMA 4X, IK10 (metal casing), UL (for optional PoE injector and power adapter)

• Integration

Unified Solution	Fully compatible with ACTi software
ISV Integration	Software Development Kit (SDK) available; ONVIF compliant (Profile S and Profile G), GB28181 compliant
Firmware Access Browser	Microsoft Internet Explorer 11, Safari with QuickTime, and other browsers with VLC installed
Auto Firmware Upgrade	Yes
GPS Position	Manual Setting

* All specifications are subject to change without notice.

* All brand names and registered trademarks are the property of their respective owners.

www.acti.com

